

# Healthcare

Rental Apparel, Linen & Services



# 4 Things To Consider

WHEN CHOOSING A UNIFORM AND TEXTILE RENTAL COMPANY

## OTHER TEXTILE RENTAL COMPANIES



1

Invoices are poorly formatted and difficult to read. Frequent price increases and unfavorable service charges are hidden in the fine print.



All rental items are provided on a single invoice at expected intervals. You'll also have complete account transparency and easy access to your account through the CLS Direct Access app.

2

Due to difficult cancellation terms, auto roll over windows, and refusing to admit fault, they are constantly suing and being sued for contract issues.



Our agreements are clear, short, and written to equally share benefits and risks. Our Owner Guarantee assures you of dependable service.

3

Having shortages and excess inventory is common. Your point of contact won't have the authority to solve service problems and they have no guaranteed response times.



CLS Direct Access allows you the ability to check on your items 24/7. A 98.5% customer retention rate means we solve your problems and won't create new ones that bog you down.

4

High turnover, low morale, and poor training results in inconsistent and impersonal service.



When you work with CLS you get a relationship-based service with a team that has the experience and tenure to make sure you're taken care of. Our Customer Care and management teams are always available to make things right.

CLS is a family-owned business that has been around since 1899, giving us an unbeatable advantage in industry experience and integrity.

[clsimage.com](http://clsimage.com)



**CLEAN GREEN®**

**TRSA Certified**  
Reusable Textile Industry



## **Our Commitment to Environmental Sustainability**

CLS takes environmental sustainability seriously. Since 2014 we have been working on ways to cut down on our utility usage and to execute ways to recycle or repurpose our products. We are always looking for opportunities to partner with our vendors to find innovative ways of being green.

The Textile Rental Services Association (TRSA) has awarded CLS the Clean Green Certification for several years. This certification acknowledges our commitment to improving our water and overall energy efficiency through conservation efforts.

In addition to our Clean Green Certification, CLS has recently completed a few large projects that have provided major impacts toward improving our environmental sustainability.

One was the installation of the OMNI Oxidation Laundry System. This system supercharges and sanitizes our water, which allows us to reduce the amount of water we use during our wash cycles. This system will allow us to save approximately one million gallons of water every year!

CLS also recently completed a major automation project to help sort our product. Our new system is highly computerized with weight monitoring devices which allows us to make sure every load of laundry we wash is at the proper size. Having proper load sizes maximizes our wash aisle capacity, our chemistry, and our utility usage. In return, our product has a more consistent level of quality to deliver to our valuable customers.

In 2020, CLS took advantage of a program that Consumers Energy offers to assess our steam traps to determine if they are working properly. We utilize steam in a variety of areas throughout our Production Process and steam traps need to be checked on a regular basis to avoid wasting valuable energy.

All of this combined with our other recycling efforts and use of green certified chemicals will help CLS reduce our impact on the environment.

# UNIFORM PROGRAM

## HOW DOES OUR UNIFORM PROGRAM WORK?



5 in the wash

+



5 in the locker

+



1 on your back



Our new state of the art sorting system modernizes our facility to ensure customer satisfaction.

Check on your order status via the CLS Direct Access app. You can track your uniforms, place service requests, and view or pay invoices all in one place.



# LAB COATS AND FLUID RESISTANT APPAREL



**WOMENS LAB COAT**

KP13



**UNISEX LAB COAT**

5700



**UNISEX LAB COAT**

KP14

**KP13 / KP14 / 5700**



WHITE LIGHT BLUE

**DL170BJ / DL171 / DL147**



BLACK CEIL ROYAL WHITE

**DL151**



CEIL ROYAL WHITE

**DL151**



CEIL WHITE

Denline Uniforms

Industry Leading Manufacturer of Fluid Resistant Personal Protective Apparel (PPE) for Healthcare Workers employed in applications with potential for splash or spray of Blood, Body Fluids, and Other Potentially Infectious Materials (OPIM), and subject to OSHA Directive(s). 29 CFR 1910, as well as Canadian Provincial Healthcare Legislative Requirements and Guidelines.



**FLUID RESISTANT WARM UP**

DL147



**FLUID RESISTANT LAB COAT**

DL151



**FLUID RESISTANT WARM UP W/ COLLAR**

DL171



**FLUID RESISTANT LAB COAT W/ COLLAR**

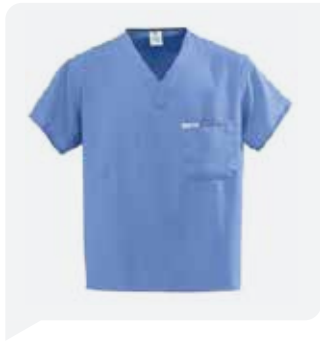
DL170BJ



**FLUID RESISTANT APRON**

DL175

# SCRUBS



**PERFORMAX SCRUB TOP**

810



**PERFORMAX SCRUB WARM UP**

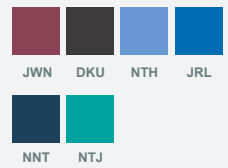
829



**PERFORMAX SCRUB BOTTOM**

800

PERFORMAX SCRUB  
TOP / BOTTOM /  
WARM UP



# LOGO OPTIONS



Company and Name Emblems



Direct Embroidery



Heat Transfers

# MENS IMAGE WEAR



**1027 / 1077 / 5027 / 5077**

000	001	010	021	061

**SP80 / SP90**

BK	KH	RB	SV	WH

**SK02**

BR	KH	MB



**MENS OXFORD SHIRT**

1027 · Short Sleeve

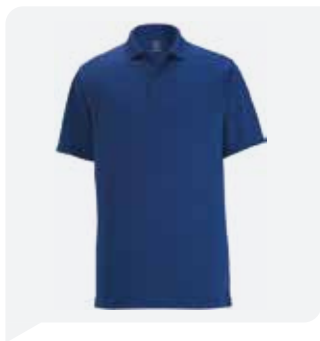
1077 · Short Sleeve



**SHORT/LONG SLEEVE DRESS SHIRT**

SP80 · Short Sleeve

SP90 · Long Sleeve



**POLO SHIRT W/O POCKET**

1512



**MENS PLEATED PANTS**

2610



**POLO SHIRT W/ POCKET**

SK02

**1512**

000	007	010	012	041

079	310

**2610 / 8619**

007	009	010	015

## WOMENS IMAGE WEAR



**WOMENS SHORT SLEEVE OXFORD SHIRT**

5027



**WOMENS PLEATED PANTS**

8619



**WOMENS LONG SLEEVE**

5077

## APPAREL AND PROMOTIONAL

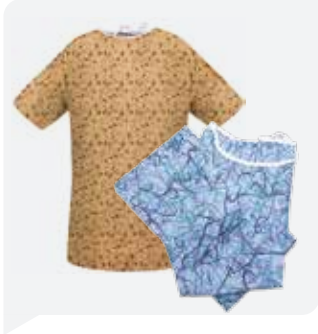


**CLS can help deliver your image with corporate apparel and promotional products.**

Contact us and we will provide you with personal attention for all your branding needs.



# PATIENT GOWNS



## ENDURANCE PATIENT GOWNS

M - 2X BLUE 820  
3XL - 10XL YELLOW 828



## PEDIATRIC AND TEEN GOWNS

810 - 811 - 812



## ENDURANCE ICU GOWNS

M - 2XL BLUE 826

# TOWELS AND MEDICAL LINENS



## THERMAL BLANKET

802



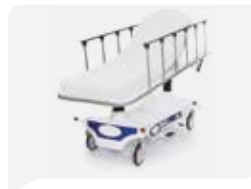
## MEDICAL TOWEL

805



## BATH BLANKET

804



## GURNEY SHEETS

45



## BED PAD

53



## SHEETS

Flat - 43 Filled - 60



## PILLOW COVERS

40



## BATH TOWEL

331



## HAND TOWEL

342



## WASH CLOTH

334

## EPIK IMAGE PROGRAM



### Distinguished brands deserve a superior look.

The new Epik line of soap, paper towel, toilet tissue, and odor control dispensers provides a modern, clean, and colorful presentation in an unexpected place.



**EPIK 245**  
AUTOMATIC PAPER  
TOWEL DISPENSER

Touch-free dispensing of white luxury paper



**EPIK 27**  
DOUBLE TOILET PAPER  
ROLL DISPENSER

High Capacity, holds two 9" rolls



**EPIK 9107**  
HANDS-FREE SOAP AND  
SANITIZER DISPENSER

Holds luxury foam hand soap or alcohol free sanitizer



**EPIK T100**  
AIR FRESHENER  
DISPENSER

Offers 60 days of odor control



**EPIK 9007**  
MANUAL SOAP AND  
SANITIZER DISPENSER

Holds luxury foam hand soap or alcohol free sanitizer



**EPIK 208**  
PULL-AND-CUT PAPER  
DISPENSER

Touchless, hands-free operation

# PAPER PRODUCTS



## ROLL PAPER DISPENSERS

7627 Auto Cut Towel Dispenser

7625 Sensor Towel Dispenser



## CENTER FEED DISPENSERS

7634 Center Feed Dispenser



## MULTIFOLD DISPENSERS

7643 Multifold and C-Fold Wall Mount

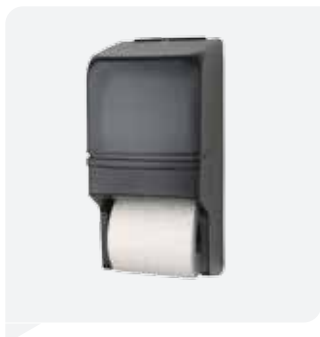


## JUMBO DISPENSERS

7632 Jumbo Tissue Dispenser

7635 Compact Jumbo Dispenser

7633 Twin Tissue Dispenser



## CONVENTIONAL DISPENSER

7637 Bath Tissue Dispenser



## FACIAL TISSUE

2253



# HAND CARE AND AIR CARE



## Hand Care



### AUTO DISPENSERS

7602 Auto Foam Dispenser - Hand Wash and Sanitizer

7602 SAN Auto Gel Hand Sanitizer



### MANUAL DISPENSERS

7601 Foam Dispenser 900 ML

7601 SAN Sanitizer Dispenser 900 ML

7603 Sanitizer Dispenser 400 ML



### GRIT SOAP DISPENSERS

7604 Grit Soap Dispenser

## Air Care



### GREENSCENT AIR DISPENSER

Dispenser 7661  
Cotton Blossom 2282 (refill), 2401 (box)  
Apple Spice 2283 (refill), 2402 (box)  
Mango 2281 (refill), 2400 (box)  
C battery 2192



### GREENSCENT BOWL CLIP

Cotton Blossom 2293 (refill), 2404 (box)  
Apple Spice 2294 (refill), 2405 (box)  
Mango 2292 (refill), 2403 (box)



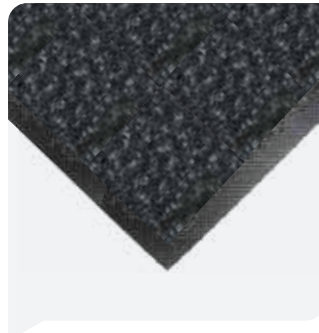
### GREENSCENT URINAL SCREEN

Cotton Blossom 2296 (refill), 2407 (box)  
Apple Spice 2295 (refill), 2408 (box)  
Mango 2299 (refill), 2406 (box)

# MATS



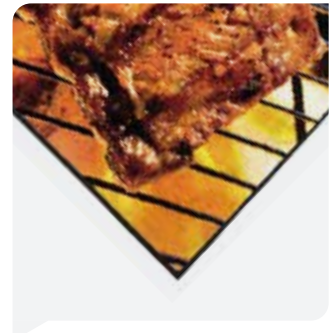
**MICHIGAN MAT**



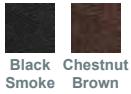
**BRUSH MAT**



**IMAGE MAT**



**HD LOGO MAT**



Black Smoke Chestnut Brown



Onyx



Chocolate/Black Navy/Black Red Pepper Silver/Black



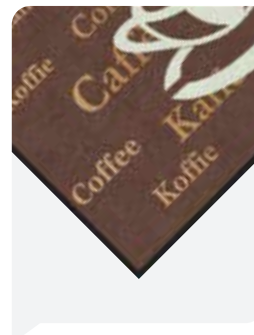
**COMFORT FLOW MAT**



**COMPLETE COMFORT II MAT**



**SUPERSCAPE PLUS MAT**

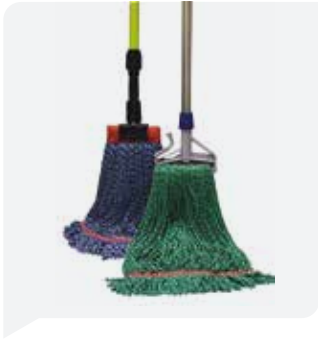


**MESSAGE MAT**



**WELCOME SCRAPER MAT**

# MOPS



## WET MOPS

1800 Microfiber Wet Mop (Medical)  
1850 Nova Wet Mop



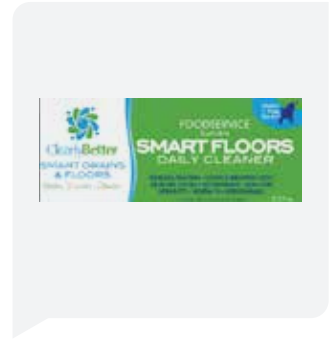
## MICROFIBER MOPS

1805 Microfiber Mop 18"  
1859 Microfiber Mop 24"



## DUST MOPS

1814 Dust Mop 24", 1826 Dust Mop 36"  
1838 Dust Mop 48", 1840 Dust Mop 60"  
1842 Dust Mop 72"



## FLOOR CLEANER

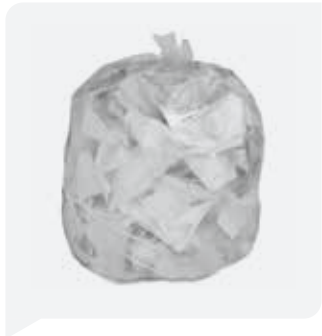
2274 Smart Enzyme Floor Cleaner



## MICROFIBER CLEANING TOWELS

DL 147

## CAN LINERS AND GLOVES



### HIGH DENSITY CAN LINERS

2310 24x33/10-15 Gallon Clear  
2312 30x37/20-30 Gallon Natural  
2314 33x40/33 Gallon Natural  
2316 40x48/40-45 Gallon Natural  
2318 38x60/60 Gallon Natural



### LOW DENSITY CAN LINERS

2320 33x39/33 Gallon Black  
2322 40x46/45 Gallon Black  
2324 38x58/60 Gallon Black



### VINYL GLOVES

505-508 Powder Free S-XL  
511-514 Powdered S-XL  
541-544 XP Stretch/Powder Free S-XL



### LATEX GLOVES

515-518 Powder Free S-XL  
519-522 Powdered M-XL



### NITRILE GLOVES

551-554 Powder Free S-XL  
526-528 Powdered M-XL  
535-537, 555 Exam/Powder Free S-XL  
562-563 Industrial/Powder Free L-XL  
Nitrile Dipped/Powder Free S-L



### POLY GLOVES

538-539 Powder Free S-L

# PPE, HAND SANITIZER, ESSENTIAL SERVICES DESINFECTANT CHEMICALS



## REUSABLE FACE COVERS

Single-ply face cover  
50/50 Cotton/Poly blend  
2 Ear-hole slots offer a customized fit

603



## DISPOSABLE MASKS

3 layer disposable mask  
Non-sterile flat mask with ear-loops  
High efficiency

601



## BIOSMART FACE MASKS

Kills up to 99.9% of many bacteria and viruses when washed and activated with chlorine bleach.

605



## MIRACLE DISINFECTANT

Ready-to-use virucide, fungicide and bactericide spray cleaner that cleans, deodorizes and disinfects.

2414 - 2412



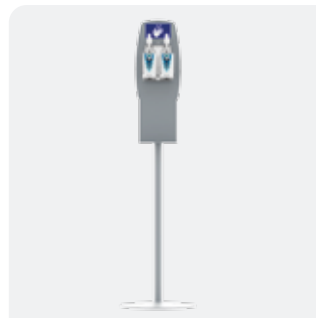
## WILDWORX MULTIPURPOSE WIPES

2264 - 2265 CS



## EZ-SAN GEL

2402 Pump  
2419202 Squeeze



## EZ-SAN GEL TOUCH FREE DISPENSER

2422 Touch Free Dispenser



## HAND SANITIZER

Alco-Foam Instant Skin Sanitizer  
2267





CLEAN GREEN™

TESA Certified  
Responsible Trade Industry

UNIFORM RENTAL  
LINEN RENTAL  
FACILITY SERVICES



A Michigan Company  
Serving Michigan People



Kalamazoo | Grand Rapids | Livonia | Saginaw | Cadillac | Alpena

[clsimage.com](http://clsimage.com) • 800-875-4636