

# Hospitality

Rental Apparel, Linen & Services



# 4 Things To Consider

WHEN CHOOSING A UNIFORM AND TEXTILE RENTAL COMPANY

## OTHER TEXTILE RENTAL COMPANIES



1

Invoices are poorly formatted and difficult to read. Price increases and unfavorable service charges are hidden in the fine print.



We provide all rental items on a single invoice at expected intervals. You'll also have complete account transparency and easy access to your account through the CLS Direct Access app.

2

Due to difficult cancellation terms, auto roll over windows, and refusing to admit fault, they are constantly suing and being sued for contract issues.



Our agreements are clear, short, and written to equally share benefits and risks. Our Owner Guarantee assures you of dependable service.

3

Having shortages & excess inventory is common. Your point of contact won't have the authority to solve service problems and they have no guaranteed response times.



Direct Access allows you the ability to check on your items 24/7. We have a 98.5% customer retention rate, much higher than any of the national chains.

4

High turnover, low morale, and poor training results in inconsistent and impersonal service.



At CLS, we pride ourselves on relationships. Our Route Sales Professionals have an average tenure of 11+ years. You also get a dependable Management Team who's always available to answer your questions.

CLS is a family-owned business that has been around since 1899, giving us an unbeatable advantage in industry experience and integrity.

[clsimage.com](http://clsimage.com)



# Table of Contents

Chef Coats .....	4
Food Service Apparel .....	5
Men's Imagewear.....	6
Women's Imagewear .....	7
Aprons .....	7
Apparel & Promotional products .....	8
Towels, Linen & Napkins .....	9
Epik Image Program .....	10
Paper Products .....	11
Hand Care & Air Care .....	12
Mats .....	13
Mops .....	14
Can Liners & Gloves .....	15
Uniform Program .....	16
PPE, Hand Sanitizer and Disinfectant Chemicals.....	17

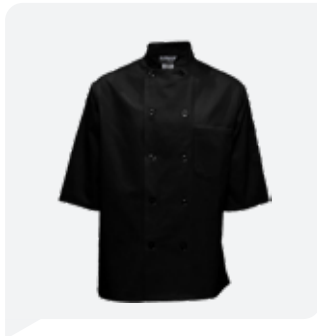
# CHEF COATS



**LONG SLEEVE  
CHEF COAT**

w/ Buttons

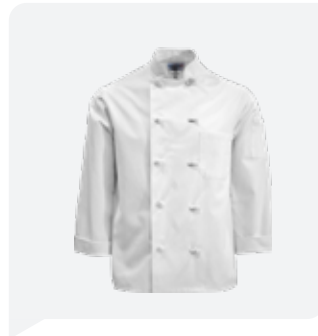
C310 · White or Black



**SHORT SLEEVE  
CHEF COAT**

w/ Buttons

C312 · White or Black



**LONG SLEEVE  
KNOTTED CHEF COAT**

C330 · White

C380 · Black



**SHORT SLEEVE  
VENTED CHEF COAT**

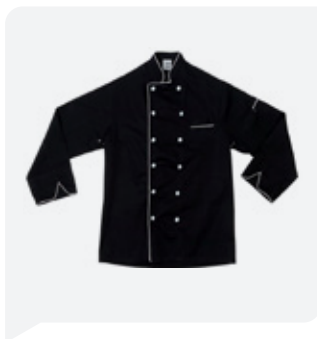
3331 · White or Black



**EXECUTIVE  
CHEF COAT**

w/ Black Trim

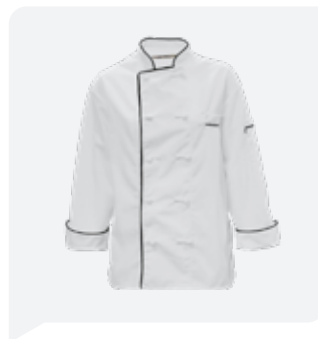
C825



**MASTER  
CHEF COAT**

w/ White Piping

C851

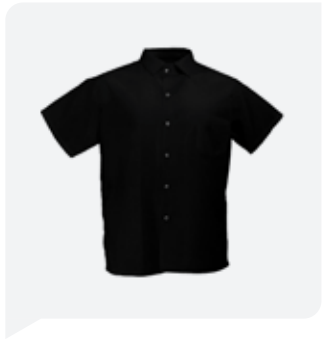


**MASTER  
CHEF COAT**

w/ Black Piping

C355

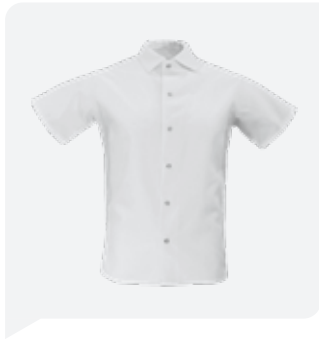
# FOOD SERVICE APPAREL



**COOK SHIRT**

w/ Pocket

S302 · White or Black



**COOK SHIRT**

w/ Pocket

C315 · White | 5035BK · Black



**CHECKERED CHEF PANT**

PS64WB



**FOOD SERVICE COAT**

F395



**BUTCHER FROCK**

F380



**SHOP COAT**

KT30



**BAGGY CHEF PANT**

B350 · Black | B351 · Check

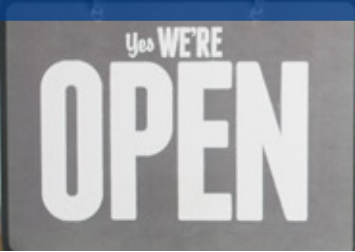


**BAGGY CHEF PANT**

PS54CS · Chalk Stripe



# MEN'S IMAGE WEAR



**MEN'S OXFORD SHIRT**

1027 · Short Sleeve

1077 · Long Sleeve



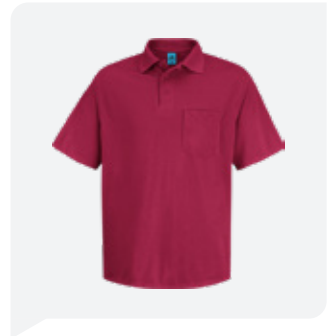
**SHORT SLEEVE DRESS SHIRT**

SP80



**LONG SLEEVE DRESS SHIRT**

SP90



**POLO SHIRT**

w/ Pocket

SK02



**POLO SHIRT**

w/o Pocket

1512



**MEN'S PLEATED PANTS**

2610

<p><b>SP80 / SP90</b></p> <p>BK KH RB SV WH</p>	<p><b>SK02</b></p> <p>BR KH MB</p>
<p><b>2610 / 8619</b></p> <p>007 009 010 015</p>	<p><b>1027 / 1077 / 5027 / 5077</b></p> <p>000 001 010 021 061</p>
<p><b>1512</b></p> <p>000 007 010 012 041 079 310</p>	



## WOMEN'S IMAGE WEAR



**WOMEN'S SHORT SLEEVE OXFORD SHIRT**

5027



**WOMEN'S PLEATED PANTS**

8619



**WOMEN'S LONG SLEEVE**

5077



## APRONS



**BIB APRON**

Available in multiple colors



**BISTRO APRON**

Black or White

# APPAREL AND PROMOTIONAL PRODUCTS

CLS can help deliver your image with corporate apparel and promotional products. Contact us and our Sales Consultants will provide you with personal attention for all your branding needs.

Contact us at [sales@clsimage.com](mailto:sales@clsimage.com)



## Logo Options



Direct Embroidery



Company & Name Emblems



Heat Transfers



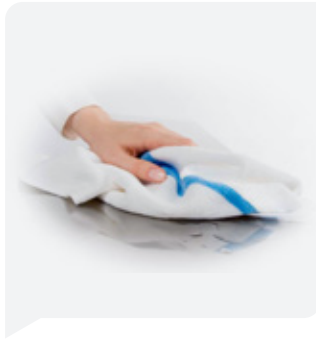


## TOWELS, TABLE LINENS AND NAPKINS

### Towels



**BAR TOWELS**

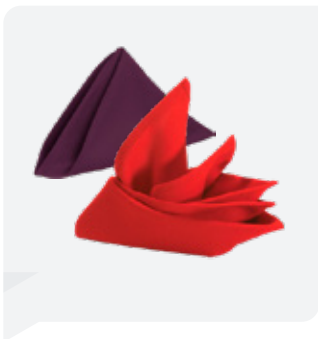


**MICROFIBER TOWELS**



**MICROFIBER  
CLEANING TOWELS**

### Table Linens & Napkins



**COLORED NAPKINS**



**BISTRO NAPKINS**



**ROUND  
TABLE LINENS**

Sizes up to 132"

Delivered on hangers



**REGULAR  
TABLE LINENS**

Sizes up to 90x156"

White or Color

## EPIK IMAGE PROGRAM



### Distinguished brands deserve a superior look.

The new Epik line of soap, paper towel, toilet tissue, and odor control dispensers provides a modern, clean, and colorful presentation in an unexpected place.



**EPIK245**  
AUTOMATIC PAPER  
TOWEL DISPENSER

Touch-free dispensing of white luxury paper



**EPIK27**  
DOUBLE TOILET PAPER  
ROLL DISPENSER

High Capacity, holds two 9" rolls



**EPIK9107**  
HANDS-FREE SOAP &  
SANITIZER DISPENSER

Holds luxury foam hand soap or alcohol free sanitizer



**EPIK T100**  
AIR FRESHENER  
DISPENSER

Offers 60 days of odor control



**EPIK9007**  
MANUAL SOAP &  
SANITIZER DISPENSER

Holds luxury foam hand soap or alcohol free sanitizer

# PAPER PRODUCTS



## ROLL PAPER DISPENSERS

7627 Auto Cut Towel Dispenser

7625 Sensor Towel Dispenser



## CENTER FEED DISPENSERS

7634 Center Feed Dispenser

7626 Compact Center Feed Dispenser



## MULTIFOLD DISPENSERS

7643 Multifold & C-Fold Wall Mount

7630 Express Tork Tabletop Dispenser

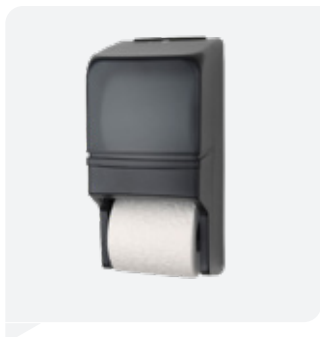


## JUMBO DISPENSERS

7632 Jumbo Tissue Dispenser

7635 Compact Jumbo Dispenser

7633 Twin Tissue Dispenser



## CONVENTIONAL DISPENSER

7637 Bath Tissue Dispenser



## FACIAL TISSUE

2253



## HAND CARE AND AIR CARE



### Hand Care



#### AUTO DISPENSERS

7602 Auto Foam Dispenser & Sanitizer



#### GRIT SOAP DISPENSERS

7604 Grit Soap Dispenser



#### MANUAL DISPENSERS

7601 Foam Dispenser

7603 Sanitizer Dispenser

### Air Care



#### GREENSCENT AIR DISPENSER

Dispenser 7661  
Cotton Blossom 2282 (refill), 2401 (box)  
Apple Spice 2283 (refill), 2402 (box)  
Mango 2281 (refill), 2400 (box)  
C battery 2192



#### GREENSCENT BOWL CLIP

Cotton Blossom 2293 (refill), 2404 (box)  
Apple Spice 2294 (refill), 2405 (box)  
Mango 2292 (refill), 2403 (box)



#### GREENSCENT URINAL SCREEN

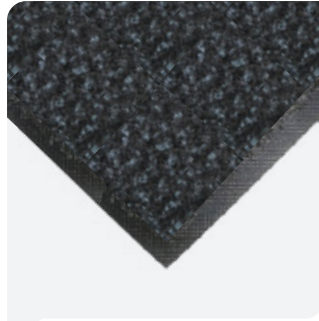
Cotton Blossom 2296 (refill), 2407 (box)  
Apple Spice 2295 (refill), 2408 (box)  
Mango 2299 (refill), 2406 (box)



# MATS



**MICHIGAN MAT**



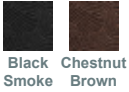
**BRUSH MAT**



**IMAGE MAT**



**HD LOGO MAT**



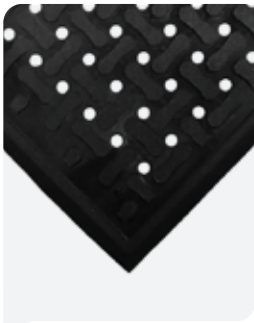
Black Smoke Chestnut Brown



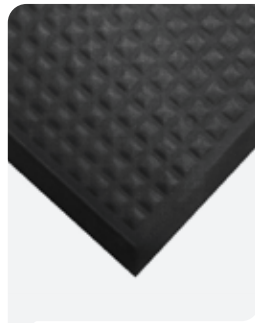
Onyx



Chocolate/Black Navy/Black Red Pepper Silver/Black



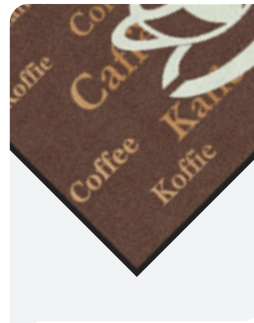
**COMFORT FLOW MAT**



**COMPLETE COMFORT II MAT**



**SUPERSCAPE PLUS MAT**

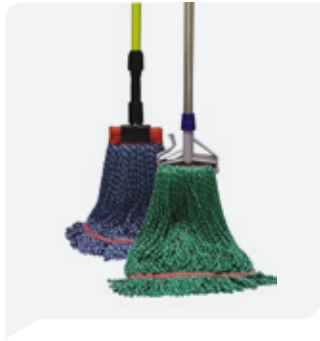


**MESSAGE MAT**



**WELCOME SCRAPER MAT**

# MOPS



## WET MOPS

1800 Microfiber Wet Mop (Medical)

1850 Nova Wet Mop



## MICROFIBER MOPS

1805 Microfiber Mop 18"

1859 Microfiber Mop 24"

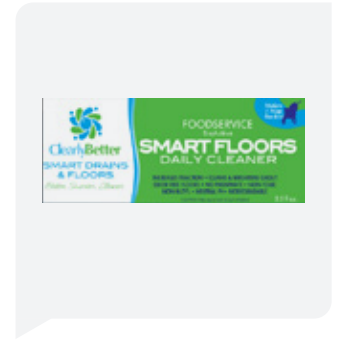


## DUST MOPS

1814 Dust Mop 24", 1826 Dust Mop 36"

1838 Dust Mop 48", 1840 Dust Mop 60"

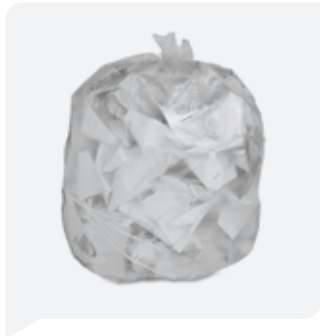
1842 Dust Mop 72"



## FLOOR CLEANER

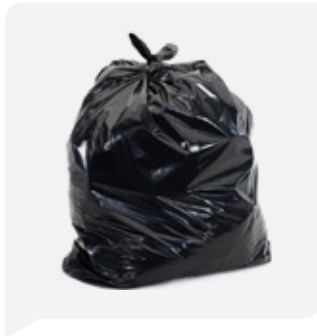
2274 Smart Enzyme Floor Cleaner

## CAN LINERS AND GLOVES



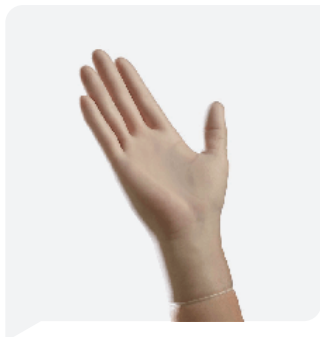
### HIGH DENSITY CAN LINERS

2310 24x33/10-15 Gallon Clear  
2312 30x37/20-30 Gallon Natural  
2314 33x40/33 Gallon Natural  
2316 40x48/40-45 Gallon Natural  
2318 38x60/60 Gallon Natural



### LOW DENSITY CAN LINERS

2320 33x39/33 Gallon Black  
2322 40x46/45 Gallon Black  
2324 38x58/60 Gallon Black



### VINYL GLOVES

505-508 Powder Free S-XL  
511-514 Powdered S-XL  
541-544 XP Stretch/Powder Free S-XL



### LATEX GLOVES

515-518 Powder Free S-XL  
519-522 Powdered M-XL



### NITRILE GLOVES

551-554 Powder Free S-XL  
526-528 Powdered M-XL  
535-537, 555 Exam/Powder Free S-XL  
562-563 Industrial/Powder Free L-XL  
Nitrile Dipped/Powder Free S-L



### POLY GLOVES

538-539 Powder Free S-L





## UNIFORM PROGRAM

### HOW DOES OUR UNIFORM PROGRAM WORK?



5 in the wash

+



5 ready to wear

+



1 on your back



Our new state of the art sorting system modernizes our facility to ensure customer satisfaction.

Check on your order status via the CLS Direct Access app. You can track your uniforms, place service requests, and view or pay invoices all in one place.





# PPE, HAND SANITIZER AND DESINFECTANT CHEMICALS



## REUSABLE FACE COVERS

Single-ply face cover  
50/50 Cotton/Poly blend  
2 Ear-hole slots offer a customized fit



## DISPOSABLE MASKS

3 layer disposable mask  
Non sterile flat mask with ear-loops  
High efficiency



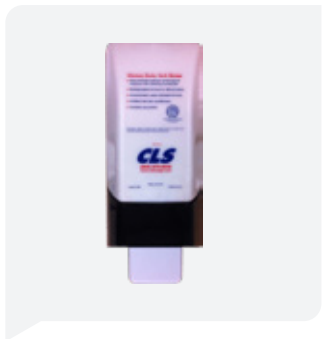
## BIOSMART FACE MASKS

Kills up to 99.9% of many bacteria & viruses when washed & activated with chlorine bleach.

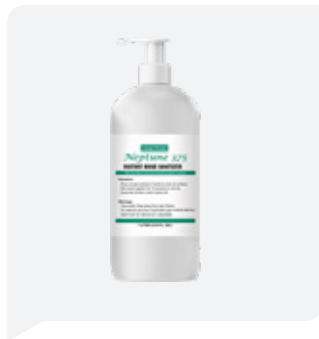


## MIRACLE DISINFECTANT

Ready-to-use virucide, fungicide and bactericide spray cleaner that cleans, deodorizes and disinfects.



## MOISTURIZING GRIT SOAP



## NEPTUNE 375 HAND SANITIZER

Gel Hand Sanitizer



## FOAM SOAP

JLB Solutions



## HAND SANITIZER

Alco-Foam Instant Skin Sanitizer

2266



CLEAN GREEN

TBSA Certified  
Responsible Trade Industry

UNIFORM RENTAL  
LINEN RENTAL  
FACILITY SERVICES



A Michigan Company  
Serving Michigan People



Kalamazoo | Grand Rapids | Livonia | Saginaw | Cadillac | Alpena

[clsimage.com](http://clsimage.com) • 800-875-4636